



WHITE SMOKE

WS1

1400 DWT LNG/FO COMBO BUNKER VESSEL



The WS1 LNG/FO combo bunker vessel is designed for an imponderable future. Combining the traditional ship fuel with LNG it is able to adapt to a continuously changing market. Its flexible cargo configuration makes it possible to adjust the cargo mix in line with changing demands.

It is equipped with a redundant dual fuel electric propulsion machinery which generates excellent manoeuvrability and superb environmental performance.

The design is developed in close cooperation with both DNV, Lloyds Register and Swedish flag state authorities and fulfil all present rules.

Main Particulars (Alt design)

LOA	~68 m (83,3 m)		
L _{pp}	63,0 m (78,3 m)		
B _m	13 m	Main power prod.	2 x 841 kW _e
D _{design}	4 m	Aux. power prod.	1 x 400 + 1 x 200 kW _e
D _{scantling}	4,5 m	Speed	11 knots
HFO	600 m ³ (0 m ³)	Main propulsion	2 x 750 kW (Azimuth)
MDO	520 m ³ (520m ³ /1 000 m ³)	Bow thruster	1 x 200 kW
LNG	700 m ³ (1 000 m ³ /1 400 m ³)	Flag	Swedish
Deadweight	~1400 tonnes	Crew	4-7

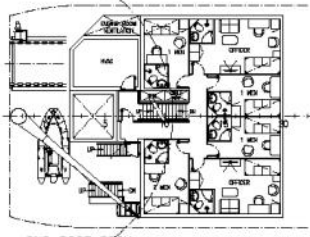
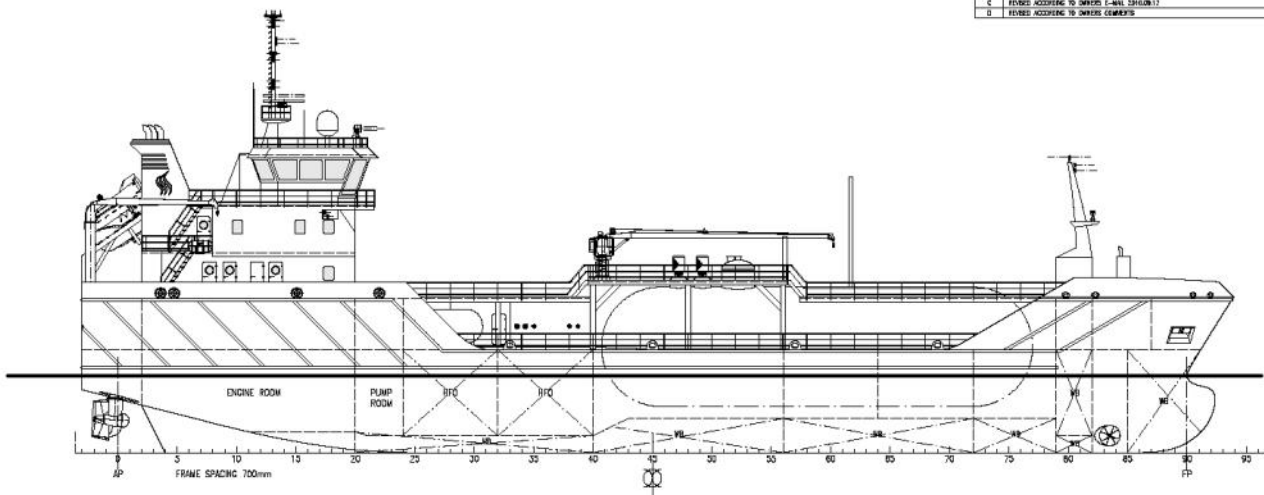
Class notation DNV:

× 1A1 R1, Tanker for oil with flashpoint above 60° C, Tanker for liquefied gas, E0, ICE-1C, Gas Fuelled, Clean Design, RP
Register Notation, Ship Type 2PG -164°C, 500 kg/m³, 7 bar

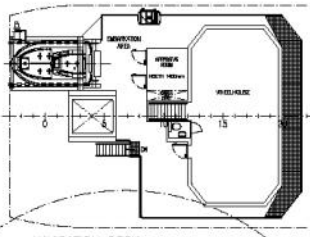
Class notation Lloyds Register

× 100A1 Double Hull Oil Tanker, Liquefied Gas Carrier, Ship Type 2PG, LNG, in Independent type C, Minimum Temperature minus 164 deg C, Carriage of Oils with a F.P. exceeding 60°C, EP (N, S), SAR, Ice Class 1C FS, × LMC, IGS, UMS, ICC, PSMR, GF

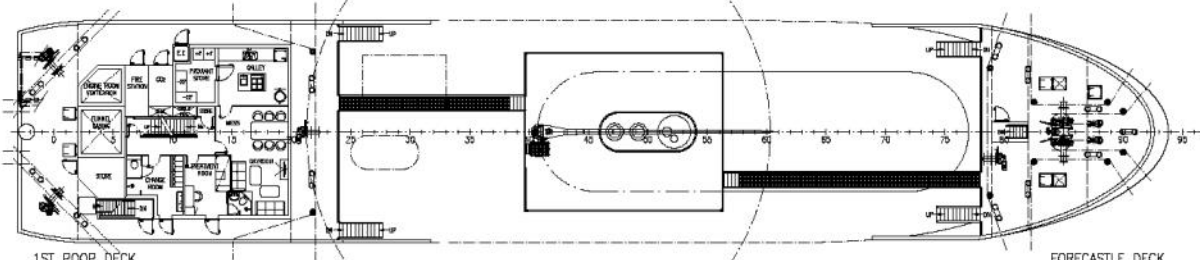
ISSUE	DESCRIPTION	DATE	BY	CHKD
A	FOR CONSTRUCTION	2010.08.17	WSS	
B	REVISIONS			
C	REVISIONS			
D	REVISIONS			



2ND POOP DECK

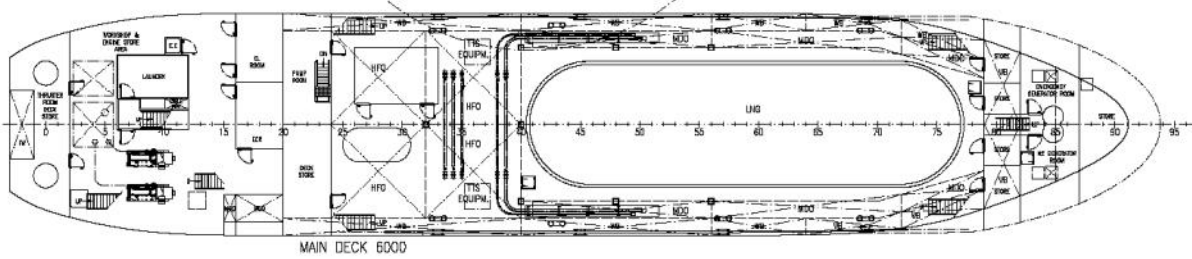


NAVIGATION DECK

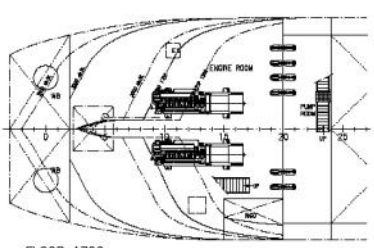


1ST POOP DECK

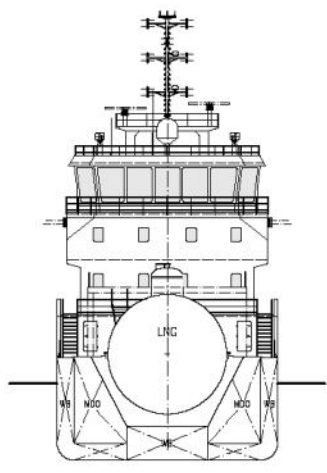
FORECASTLE DECK



MAIN DECK 6000



FLOOR 1700



MIDSHIP SECTION

MAIN DIMENSIONS:

LENGTH o.a.	obt. 68,00 m
LENGTH between P.P.	63,00 m
BREADTH mid	13,00 m
DEPTH main deck	6,00 m
DESIGN DRAUGHT	4,50 m
DEADWEIGHT	obt. 1.400 tonnes
CARGO CAPACITY LNG	obt. 700 m³
CARGO CAPACITY HFO	obt. 600 m³
CARGO CAPACITY MDO	obt. 520 m³

IA ELISABETH

	DATE	2010.08.17	SCALE	1:150
	DRWING	KEY	DRWING	
WSS P1004-1-102 LNG/HFO/MDO BUNKER TANKER GENERAL ARRANGEMENT				
PROJECT NO.	WSS P1004-1-102	SHEET	1	TOTAL